

# Building Network Guide

What a Building Network Operator is,  
what its responsibilities are and how  
the system works.



**Scottish & Southern**  
Electricity Networks

## What is a Building Network Operator (BNO)?

**A Building Network Operator is a term used to describe an organisation that owns or operates the electricity distribution network within a multi occupancy building between the intake cut out position (our first point of isolation) and the customer's installation.**

A BNO is responsible for the design, installation and maintenance of the building network. The building shall satisfy the requirements of Building Regulations, British Standard 7671 (IET Wiring Regulations), British Standard 8313 (code of practice for the accommodation of building services in ducts) and British Standard 9999 (code of practice for fire safety in the design, management and use of buildings). The developer should liaise with all utilities including the Distribution Network Operator at the earliest opportunity to determine what the appropriate arrangement will be.

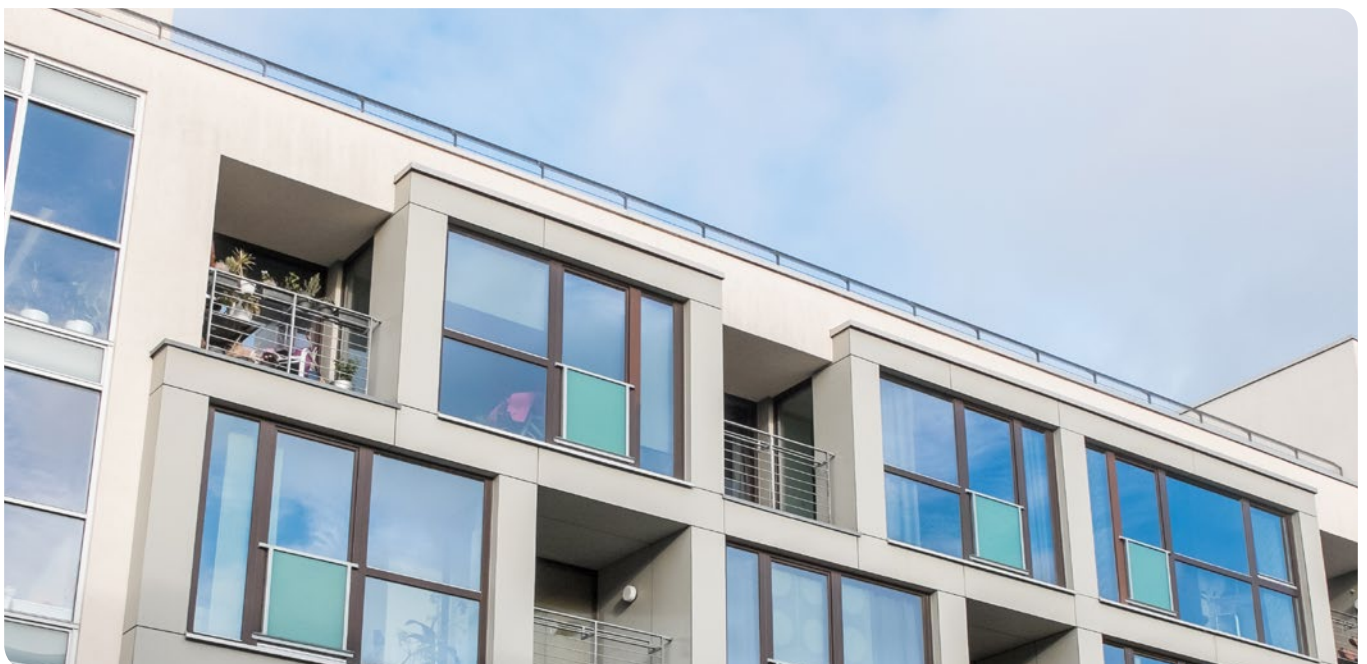
---

## Meter Point Administration Numbers (MPANs)

**Meter Point Administration Numbers (MPANs) are usually created when a Developer contacts the licensed distributor ([distribution.mpan.requests@sse.com](mailto:distribution.mpan.requests@sse.com)) with an accepted plan showing the number of Premises to be connected (including the Landlord's connection).**

The licensed distributor will then create the MPANs and provide them to the Developer. The first Customer for each Premises, which may be the Developer, will need to register this MPAN with a chosen Supplier before a meter can be installed.

When an MPAN is created, it is associated with an address. Whether this is a plot or postal reference, that address is unique to that MPAN and cannot be changed afterwards (other than a plot-to-postal conversion, or changes by Royal Mail to the definitive address). Developers shall only use an MPAN for the Premises/plot/postal address to which it was originally allocated by the licensed distributor.

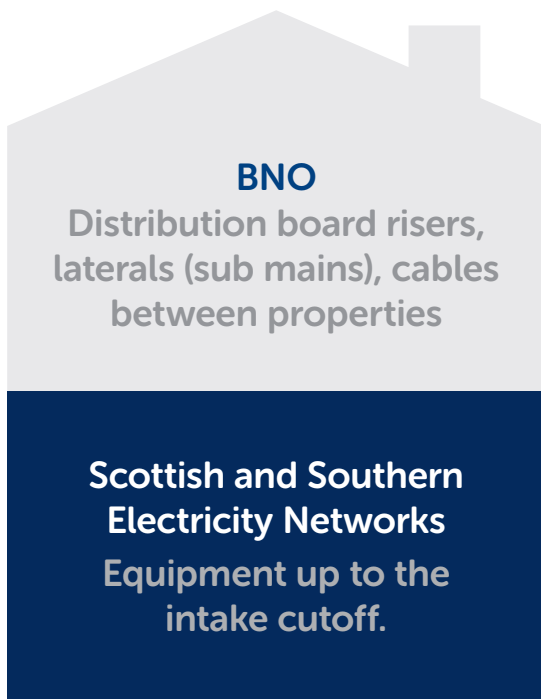


## How does a BNO work?

As part of our drive to offer more choice and allow more competition into works previously offered only by Scottish and Southern Electricity Networks we are looking at supplying up to the intake cut out position and allowing other network operators to do the rest. This document will outline the role of a building network operator.

Scottish and Southern Electricity Networks will own and be responsible for all equipment up to the intake cut out. The BNO will be responsible for the installation of the distribution board, risers, laterals (sub mains) and the cables between individual properties within a multi-occupied building.

Please note that Scottish and Southern Electricity Networks is the only company that can terminate the wiring from your board/first point of isolation to our cut out. Whilst the Distribution Network Operator may agree to extend its settlement arrangements to each individual Premises served by the BNO Network this does not detract from the obligations of the BNO in respect of inspecting, repairing, maintaining or replacing the BNO Network.



**There are two documents online that can provide you with detail on this subject. These can be found on the following government web pages:**

Electricity and Gas (Internal Markets) Regulations 2011 can be found at:

[legislation.gov.uk/uksi/2011/2704/schedule/2/made](https://legislation.gov.uk/uksi/2011/2704/schedule/2/made)

Guidance for the Electricity Order 2001 can be found at:

[gov.uk/electricity-licence-exemptions](https://gov.uk/electricity-licence-exemptions)



**Scottish & Southern**  
Electricity Networks

Visit us at [ssen.co.uk](https://www.ssen.co.uk)

or contact us on:

**Scotland**

 **0800 048 3515**

 **connections@sse.com**

**England**

 **0800 048 3516**

 **connections@sse.com**

All links and information contained in this booklet are correct at time of publication.

