



Scottish & Southern  
Electricity Networks

Powering our  
community

# Connections Contact and Escalation guide

South (SEPD)



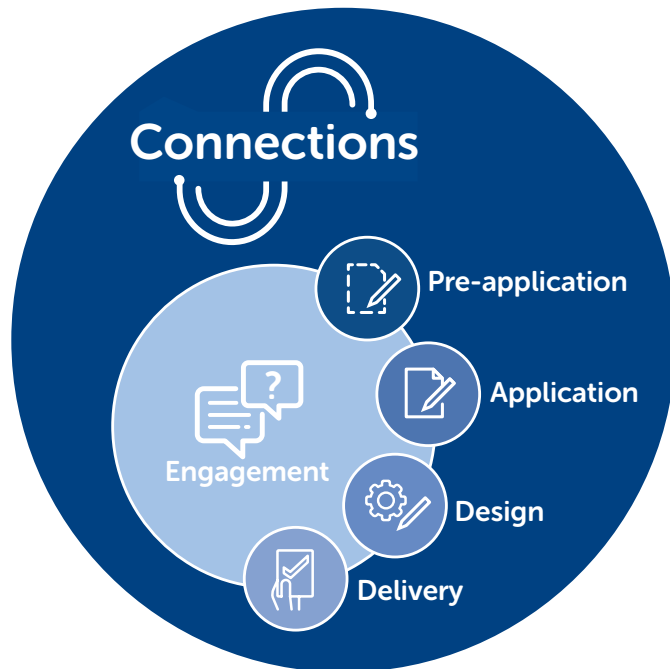
# SSEN Connections

Scottish and Southern Electricity Networks (SSEN) operates in two licence areas; Scottish Hydro Electric Power Distribution (SHEPD) in northern Scotland and Southern Electric Power Distribution (SEPD) in central southern England. This guide outlines the contacts and escalation routes for our SEPD licence area.

## About this document

We are committed to offering our customers and stakeholders the very best in customer service. We are keen to equip you with the knowledge, tools and support you need to complete your connections, and provide you with as much information as possible about our processes and procedures to aid your connections journey.

This guide sets out the overarching stages of the connections journey and details the relevant contacts for each stage. It also provides escalation routes.



## Contents

<b>Pre-application</b>	
Account Managers.....	03
<b>Application</b>	
Application & Quote Acceptance.....	04
<b>Design</b>	
Regional Design Managers .....	05
System Planning Manager .....	05
<b>Delivery</b>	
Connections Delivery Managers.....	06
<b>RIIO-ED2</b>	
RIIO-ED2 Connections Strategy .....	07
<b>Low Carbon Technologies</b>	
Electric Vehicles .....	08
Flexible Solutions Team .....	09
DSO Team .....	10
<b>Engagement</b>	
Connections Engagement (ICE) team .....	11
<b>Escalation route</b>	
Director of Connections.....	12
Heads of Connections .....	12
<b>Compliments &amp; Complaints .....</b>	<b>13</b>

# Pre-application (through to Delivery)

## Account Managers



**Chris McKaig**  
Connections Business  
Relationship Manager  
[chris.mckaig@sse.com](mailto:chris.mckaig@sse.com)  
07876 837186



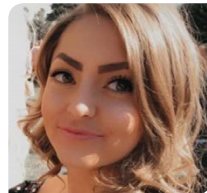
**Thomas Jeavons-Fellows**  
Lead Account Manager  
[thomas.fellows@sse.com](mailto:thomas.fellows@sse.com)  
07469 411837



**Linda Austin**  
Account Manager  
South East MAJP (Major Projects)  
[linda.austin@sse.com](mailto:linda.austin@sse.com)  
07469 411935



**Sophie Winter**  
Account Manager  
Ridgeway MAJP (Major Projects)  
[sophie.winter@sse.com](mailto:sophie.winter@sse.com)  
07384 802616



**Abigail Furey**  
Account Manager  
South East  
[abigail.furey@sse.com](mailto:abigail.furey@sse.com)  
07436 491 626



**Robert Arthur**  
Account Manager  
Ridgeway  
[robert.arthur2@sse.com](mailto:robert.arthur2@sse.com)  
07384 802585



**Claire Graham**  
Account Manager  
Wessex  
[claire.graham@sse.com](mailto:claire.graham@sse.com)  
07469 411748



**Dab Nzeribe**  
Account Manager  
Thames Valley & EVs  
[dab.nzeribe@sse.com](mailto:dab.nzeribe@sse.com)  
07469 411537



**Ruth Lundi**  
Account Manager  
Wessex MAJP (Major Projects)  
[ruth.lundi@sse.com](mailto:ruth.lundi@sse.com)  
07443 175172



**Andy Crumley**  
Account Manager  
Thames Valley MAJP  
(Major Projects)  
[andy.crumley@sse.com](mailto:andy.crumley@sse.com)  
07810 858123



## Responsible for

- Assisting allocated account portfolios with connections journey from pre-application to delivery
- Ensuring Connection Offers are procured accurately and progressed efficiently upon acceptance
- Arranging pre-application meetings and connections surgeries

Our Account Managers are involved throughout the connections journey and can be contacted at any stage.

If you would like to book a meeting regarding one or more prospective project(s), please contact

**[commercial.contracts@sse.com](mailto:commercial.contracts@sse.com)**

If you would like to book a meeting regarding one or more projects already in progress, please sign up to attend one of our monthly connections surgeries [here](#):

[www.ssen.co.uk/stakeholderevent/basicsearch/](http://www.ssen.co.uk/stakeholderevent/basicsearch/)

## Points of escalation

1<sup>st</sup> point of escalation is  
**Thomas Jeavons-Fellows,**  
Lead Account Manager

2<sup>nd</sup> point of escalation is  
**Chris McKaig,**  
Connections Business Relationship Manager

3<sup>rd</sup> point of escalation is  
**Mark MacDonald,**  
Head of Development, Policy & Support

4<sup>th</sup> point of escalation is  
**Andrew Scott,**  
Director of Connections



# Application

## Applications & Quote Acceptance



**Ben Harriss**  
Connections Contact  
Centre Manager

[benjamin.harriss@sse.com](mailto:benjamin.harriss@sse.com)  
07780 228609



**Kerrie Coan**  
Telephony Team Manager

Minor connection applications  
& all connections enquiries

[kerrie.coan@sse.com](mailto:kerrie.coan@sse.com)  
[connections@ssen.co.uk](mailto:connections@ssen.co.uk)



**Jacob Coates**  
Connections & Engineering Team  
Manager

[jacob.coates@sse.com](mailto:jacob.coates@sse.com)



**Alison Wilkes**  
Telephony Team Manager

Minor connection applications  
& all connections enquiries

[alison.wilkes@sse.com](mailto:alison.wilkes@sse.com)  
[connections@ssen.co.uk](mailto:connections@ssen.co.uk)



**Rowena Langford**  
Digital Application Team Manager

All email and online  
connections applications

[rowena.langford@sse.com](mailto:rowena.langford@sse.com)  
[connections@ssen.co.uk](mailto:connections@ssen.co.uk)



**Gemma Overall**  
Quote Acceptance Team Manager

Connections acceptance &  
customer payments

[gemma.overall@sse.com](mailto:gemma.overall@sse.com)  
[quote.acceptance@sse.com](mailto:quote.acceptance@sse.com)



**Stephanie Woodcock**  
Generation Team Manager

Generation applications above  
3.68kW

[stephanie.woodcock@sse.com](mailto:stephanie.woodcock@sse.com)  
[north.microgen@sse.com](mailto:north.microgen@sse.com)  
[mcc@sse.com](mailto:mcc@sse.com)



### Responsible for

- Raising applications
- Taking payments
- Providing guidance on application and quotation process

Our Application & Quote Acceptance team are happy to provide help and advice on the application and quote acceptance process via phone or email. Applications can be raised via phone, email or online

[connections@ssen.co.uk](mailto:connections@ssen.co.uk)

0800 048 3516

[www.ssen.co.uk/ConnectionServices/NewConnections/](http://www.ssen.co.uk/ConnectionServices/NewConnections/)

### Points of escalation

1<sup>st</sup> point of escalation is  
**Ben Harriss,**  
Connections Contact Centre Manager

2<sup>nd</sup> point of escalation is  
**Lisa Doogan,**  
Head of Customer Service & Stakeholder Strategy

3<sup>rd</sup> point of escalation is  
**Andrew Scott,**  
Director of Connections



# Design

## Contestable

Work that can be completed by an alternative provider (an ICP or an IDNO)



**Nick Palmer**  
Contestable Design Manager  
South East and Wessex  
[nicholas.palmer@sse.com](mailto:nicholas.palmer@sse.com)  
07825 015108



**Phillip McGuinness**  
Connections Design Manager  
Thames Valley  
[phillip.mcguinness@sse.com](mailto:phillip.mcguinness@sse.com)  
07471 347361



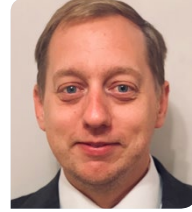
**Richard Coleman**  
Connections Design Manager  
Ridgeway  
[richard.coleman@sse.com](mailto:richard.coleman@sse.com)  
07792281440



**Michael Nunn**  
Connections Design Manager  
Minor connections across the whole region  
[michael.nunn@sse.com](mailto:michael.nunn@sse.com)

## Non-Contestable

Work that only the DNO can undertake



**Mike Rogers**  
Network Connections Design Manager  
Thames Valley & South East NC work above 250kVA  
[mike.rogers@sse.com](mailto:mike.rogers@sse.com)  
07767 850380



**James Stapley**  
Network Connections Design Manager  
Out of Area Networks, Generation and EHV Demand  
[james.stapley@sse.com](mailto:james.stapley@sse.com)  
07776 603563



**Mark Wickham**  
Network Connections Design Manager  
Thames Valley & South East NC work below 250kVA  
[mark.wickham@sse.com](mailto:mark.wickham@sse.com)  
07810 858177



**Mark Collis**  
Network Connections Design Manager  
Wessex and Ridgeway  
[mark.collis@sse.com](mailto:mark.collis@sse.com)  
07741 777201



**Mark O'Connor**  
Connections Planning Manager (South)  
[mark.j.oconnor@sse.com](mailto:mark.j.oconnor@sse.com)  
01189 534755

## Planning

System planners assess the network to ensure everything is within the allowances



## Responsible for

- Designing required works for your connection
- Quoting required works for your connection
- Providing guidance on design and quotation processes
- Assessment of the network to ensure everything is within the allowances

Our Design team are happy to provide help and advice on the design and quotation process via phone or email

If you would like to book a meeting regarding one or more prospective project(s), please contact

[commercial.contracts@sse.com](mailto:commercial.contracts@sse.com)

If you would like to book a meeting regarding one or more projects already in progress, please sign up to attend one of our monthly connections surgeries here:

[www.ssen.co.uk/stakeholderevent/basicsearch/](http://www.ssen.co.uk/stakeholderevent/basicsearch/)

## Points of escalation

1<sup>st</sup> point of escalation is

Design Managers ,  
System Planning Managers

2<sup>nd</sup> point of escalation is

Richard Mailer, Head of Connections Design & Quotation SEPD

3<sup>rd</sup> point of escalation is

Andrew Scott,  
Director of Connections





# Delivery

## Minor Connections



### Jevan Laxen

Delivery Manager –  
Minor Works

[jevan.laxen@sse.com](mailto:jevan.laxen@sse.com)  
07384 802514

## Large Connections



### Mark Rose

Delivery Manager – Large  
Connections South Coast

South East & Wessex  
[mark.rose@sse.com](mailto:mark.rose@sse.com)  
07767 852137



### Paul Towsey

Delivery Manager –  
Large Connections M4 Corridor

Ridgeway & Thames Valley  
[paul.towsey@sse.com](mailto:paul.towsey@sse.com)  
07500 912995

## Major Connections



### Aaron Phillipps

Delivery Manager –  
Major Projects

[aaron.phillipps@sse.com](mailto:aaron.phillipps@sse.com)  
07747 559858



## Responsible for:

- Carrying out onsite works including land rights
- Delivering your connection
- Providing guidance on the delivery process

Our Connections Delivery team are split into four key areas:

**Minor Connections:** Up to 4 new connections or 1 new supply up to 69kva, Service Alterations

**Large Connections:** 4 or more new connections, 1 supply larger than 69kva, diversions, disconnections

**Major Projects:** Large connections requiring 33/132kV works

**Competition in Connections (CiC):** Connections projects for Independent Connection Providers or Independent Distribution Network Operators

## Points of escalation

1<sup>st</sup> point of escalation is  
Delivery Managers

2<sup>nd</sup> point of escalation is  
Craig Gilroy,  
Head of Connections Delivery (SEPD)

3<sup>rd</sup> point of escalation is  
Andrew Scott,  
Director of Connections



# RIIO-ED2

## RIIO-ED2 Connections Strategy Team

We are a monopoly provider of electricity networks and regulated by Ofgem, the regulator which periodically sets the revenue/allowances that we can spend and recover from customers through a price control process. The upcoming process is referred to as "RIIO - ED2" and will cover the period from 2023 to 2028.



### Daniel Mellis

RIIO-ED2  
Connections Strategy Lead

[daniel.Mellis@sse.com](mailto:daniel.Mellis@sse.com)

07876 837154



### Responsible for:

Developing our business plan for the next price control, RIIO-ED2, which runs between 2023-2028.

The business plan is stakeholder-led and can be viewed on our website:

[Smarter Electricity \(ssen.co.uk\)](https://www.ssen.co.uk)

### Points of escalation

1<sup>st</sup> point of escalation is  
**Daniel Mellis, Connections Strategy Lead**

2<sup>nd</sup> point of escalation is  
**Mark MacDonald, Head of Development, Policy & Support**

Final point of escalation is  
**Andrew Scott,  
Director of Connections**



# Electric Vehicles (EV)

## EV Innovation & Strategy



**Richard Hartshorn**  
EV Readiness Manager

[richard.hartshorn@sse.com](mailto:richard.hartshorn@sse.com)  
07584 313304

### Responsible for:

- Assessing the risks and opportunities that EVs present for our distribution networks
- Helping identify suitable innovations, processes, technologies or partnerships which could help mitigate those risks or seize those opportunities
- Ensuring SSEN has the right strategy for supporting its stakeholders' decarbonisation efforts.

## EV Connections



**Dab Nzeribe**  
Account Manager

Thames Valley & EVs  
[dab.nzeribe@sse.com](mailto:dab.nzeribe@sse.com)  
07469 411537

### Responsible for:

- Assisting allocated account portfolios with EV connections journey from pre-application to delivery
- Ensuring Connection Offers are procured accurately and progressed efficiently upon acceptance
- Arranging Connections meetings to discuss prospective and in-flight projects

## EV Innovation & Strategy Points of escalation

1<sup>st</sup> point of escalation is  
**Stewart Reid,**  
Head of Future Networks

2<sup>nd</sup> point of escalation is  
**Andrew Huthwaite,**  
Director of DSO



## EV Connections Points of escalation

1<sup>st</sup> point of escalation is  
**Chris McKaig**  
Connections Business Relationship Manager

2<sup>nd</sup> point of escalation is  
**Mark MacDonald,**  
Head of Development, Policy & Support

3<sup>rd</sup> point of escalation is  
**Andrew Scott,**  
Director of Connections



# Flexible Services

## Flexible Solutions Team



**Gavin Stewart**  
Flexible Solutions Manager  
(Secondment until 31st of  
December 2021)  
[gavin.stewart@sse.com](mailto:gavin.stewart@sse.com)  
07767 850006



**Stephen W Ward**  
Flexible Solutions Designer  
  
[stephen.w.ward@sse.com](mailto:stephen.w.ward@sse.com)  
01738 275482



**Gary Huskinson**  
Flexible Solution Design &  
Support Manager  
  
[gary.huskinson@sse.com](mailto:gary.huskinson@sse.com)  
07342 026929



**Mark Homann**  
Lead Project Delivery  
Manager  
  
[mark.homann@sse.com](mailto:mark.homann@sse.com)  
07584 313225

### Responsible for:

Overseeing the roll out of certain proven innovations that require more support once they have been installed and commissioned.

Currently this means they are responsible for rolling out Active Network Management and other types of flexible connections across both our distribution areas, north and south for the benefits of your connection and to the UK customer in general.

If you have any queries in regards to Flexible Connection opportunities, please contact [flexible.connections@sse.com](mailto:flexible.connections@sse.com)

[Visit our Flexible Connections website](#)

### Points of escalation

1<sup>st</sup> point of escalation is  
Gavin Stewart,  
Flexible Solutions Manager

# Distribution System Operator

## DSO Team

SSEN strongly supports the net zero emissions targets put in place by the UK and Scottish Governments and will play an active role in delivering on this ambition.

To accommodate the changes that will enable net zero, SSEN is transitioning from a Distributed Network Operator (DNO), to become a Distribution System Operator (DSO).



**Steve Atkins**  
DSO Transition Manager

[steve.atkins@sse.com](mailto:steve.atkins@sse.com)  
07500 912637



**Victoria Murchie**  
Stakeholder &  
Communications Manager

[victoria.murchie@sse.com](mailto:victoria.murchie@sse.com)  
07789 798936

On maternity leave until mid 2022



**Frank Clifton**  
Innovation Strategy Manager

[frank.clifton@sse.com](mailto:frank.clifton@sse.com)  
07767 852706



**Fraser MacIntyre**  
Knowledge Management  
Analyst

[fraser.macintyre@sse.com](mailto:fraser.macintyre@sse.com)  
07876 837529



**Rob Britton**  
Knowledge Analyst

[rob.britton@sse.com](mailto:rob.britton@sse.com)  
07500 912236

## Responsible for:

Driving forward the swift progress toward a smarter electricity system to meet our customers' expectations.

The team ensures that we will be ready to adapt to a rapidly changing environment, which means focusing on innovation, learning by doing and making smarter investment decisions.

We regularly engage with stakeholders, directly and through the ENA's Open Networks project, to achieve a phased transition that is customer focused, cost efficient and collaborative with other stakeholders in the industry.

[Our Transition to DSO \(ssen.co.uk\)](https://www.ssen.co.uk)

## Points of escalation

1<sup>st</sup> point of escalation is

Steve Atkins,  
DSO Transition Manager



# Engagement

## Connections Engagement (ICE) Team



**Sian Hughes**

Lead Connections  
Engagement Manager

[sian.hughes2@sse.com](mailto:sian.hughes2@sse.com)  
07990 424466



**Helene Bjørndal Fosse**

Connections Engagement  
Officer

[helene.fosse@sse.com](mailto:helene.fosse@sse.com)  
07384 803112



**Debbie Watts**

Connections Engagement  
Coordinator

[debbie.watts@sse.com](mailto:debbie.watts@sse.com)  
07741 127752

### Responsible for:

- Regulatory reporting
- Engagement with large connections customers and stakeholders
- ICE commitments

The Connections Engagement team was implemented by Ofgem to help drive customer service and engagement within the Connections business. If you have any connections queries, suggestions for events or would like to get involved in our engagement, please contact us

[connectionsfeedback@sse.com](mailto:connectionsfeedback@sse.com)



### Engage with us

- [Sign up to our Connections mailing list](#)
- [View our event calendar](#)
- [Read our regulatory ICE submissions](#)
- [Visit our Webpage](#)

### Engage with us on social media



Twitter



Instagram



Facebook



LinkedIn

### Points of escalation

1<sup>st</sup> point of escalation is

**Sian Hughes,**  
Lead Connections Engagement Manager

2<sup>nd</sup> point of escalation is

**Lisa Doogan,**  
Head of Customer Service & Stakeholder Strategy

3<sup>rd</sup> point of escalation is

**Andrew Scott,**  
Director of Connections




# Escalation Route for South (SEPD)

Our networks business is split into four regions, each with a dedicated leadership team; Ridgeway, Wessex, Thames Valley and South East.

The end-to-end connections customer journey is the sole responsibility of the Connections Directorate.

This change, brought about in 2019, provides our customers and stakeholders visibility of staff responsibility and accountability throughout the journey, from application to delivery.

**Andrew Scott**  
Interim Director of Connections  
[andrew.m.scott@sse.com](mailto:andrew.m.scott@sse.com)



**Mark MacDonald**  
Head of Development, Policy & Support  
[mark.macdonald@sse.com](mailto:mark.macdonald@sse.com)  
07825015232

**Pre-application & Policy**



**Lisa Doogan**  
Head of Customer Service & Stakeholder Strategy  
[lisa.doogan@sse.com](mailto:lisa.doogan@sse.com)  
07767 850564

**Application**   **Engagement**



**Richard Mailer**  
Head of Connections Design & Quotation (South)  
[richard.mailer@sse.com](mailto:richard.mailer@sse.com)  
07767 850459

**Design**



**Craig Gilroy**  
Head of Connections Delivery (South)  
[craig.gilroy@sse.com](mailto:craig.gilroy@sse.com)  
07767 850431

**Delivery**   **Wayleaves**

# Compliments & Complaints

## Compliments

We are keen to hear your good news stories and positive experiences with our team members. If you have received particularly good service, why not commend the person or team responsible? It lets us know what we are doing right, highlights good working practices that we can all adopt and encourages certain ways of working. Compliments can be sent to the Connections Engagement team at:

[connectionsfeedback@asse.com](mailto:connectionsfeedback@asse.com)



## Complaints

We always aim to provide the best service possible, however we do understand that sometimes we don't always get it right. If you should experience this, and would like to raise a complaint you can do this via telephone, email or online

The easiest and quickest way to resolve a complaint is to telephone us:

**0800 980 1395**

Monday to Saturday between 08:00 – 16:00

If you are unable to phone or would prefer to write, you can contact us by email:

[customercomplaints@ssen.co.uk](mailto:customercomplaints@ssen.co.uk)

You can also complete our online complaints form:

[www.ssen.co.uk/Complaints/](http://www.ssen.co.uk/Complaints/)



## Engage with us

- [Sign up to our Connections mailing list](#)
- [View our event calendar](#)
- [Read our regulatory ICE submissions](#)
- [Visit our Webpage](#)

## Engage with us on social media



Twitter



Facebook



Instagram



LinkedIn

If you have any ideas for improvement of this guide please let us know:



[connectionsfeedback@sse.com](mailto:connectionsfeedback@sse.com)