

Poole Wareham 132kV Cable Replacement Customer Information Pack

July 2021



Scottish & Southern
Electricity Networks

Project Overview



- The number of faults on the existing 132kV circuits has increased and have reached an end-of-life state.
- There has been an initial investment of circa £450k spent on maintaining the current circuits, however, this will only increase in cost, as their condition continue to deteriorate.
- SSEN is investing £3.7 million to build a robust, modern power supply for those living and working in area, to ensure there is a resilient and sustainable power supply, fit for the future.
- The project to provide Poole with an upgraded 13kV electricity infrastructure commenced work on 10th May 2021, with a scheduled completion date by March 2022.
- The replacement dual circuit, 132kV cables shall run between Poole Grid and Hams Common Tower compound which form part of the Poole / Wareham – Poole /Winfrith Heath / Organford Circuits, suppling 30,000 customers.
- First work stream of project is to install 8 ducts along a 2.8km route.
- Second work stream is to pull the cables, through the ducts.
- Third work stream final connections, commissioning and energisation of the circuits.

The Route

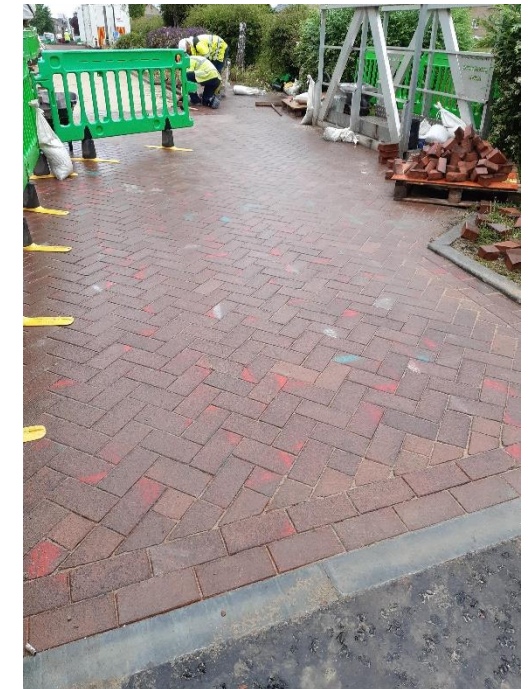
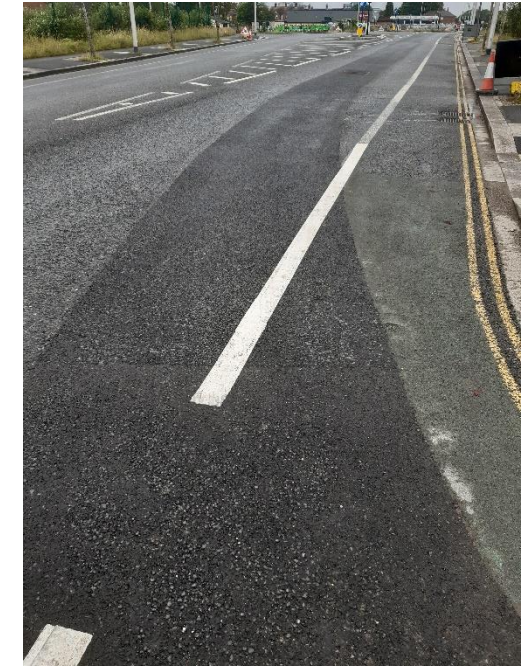
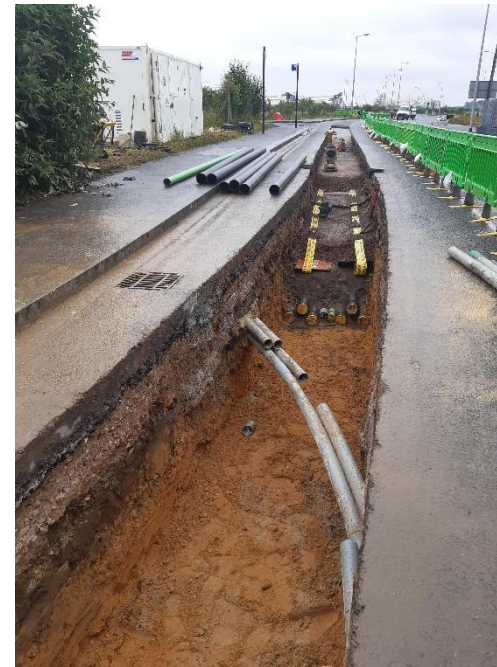


- Following consultation with our stakeholders, the selected route is deemed the one which will cause the least amount of disruption to the public and environment.
- We investigated other options, but nearby roads are extremely congested with existing utilities and the ground conditions are not suitable.
- Other routes would require extensive and prolonged road closures and would consequently have caused mass disruption to customers and commuters.
- See separate Diversion Maps on our Webpage.



Work Carried Out So Far

- Installed circa 700m of ducting at:
 - Rigler Road
 - David Way
 - Coles Avenue
 - Alley Way between David and Lake Road



Minimising Disruption to Motorist

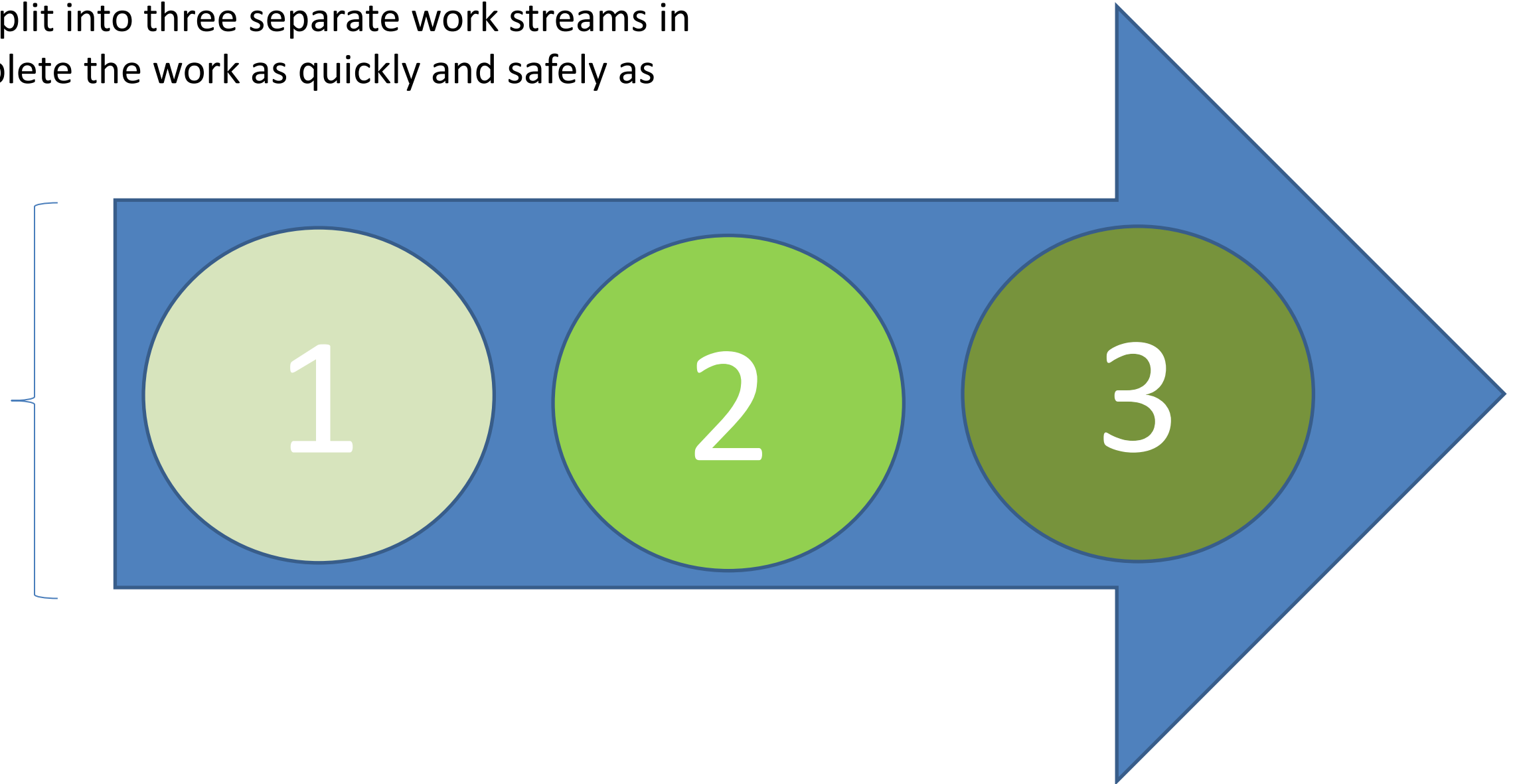
- The project involves a combination of traffic management methods including road closures.
- While we understand road closures are disruptive, we must protect the public and our workforce.
- Temporary traffic lights and stop/go boards will be used when it is safe to do so.
- We're working closely with BCP Council to minimise disruption to public transport routes and we continue to monitor traffic flow.
- BCP are adjusting signal timing to help improve traffic flow.





- The project will be split into three separate work streams in order for us to complete the work as quickly and safely as possible.

Work Streams

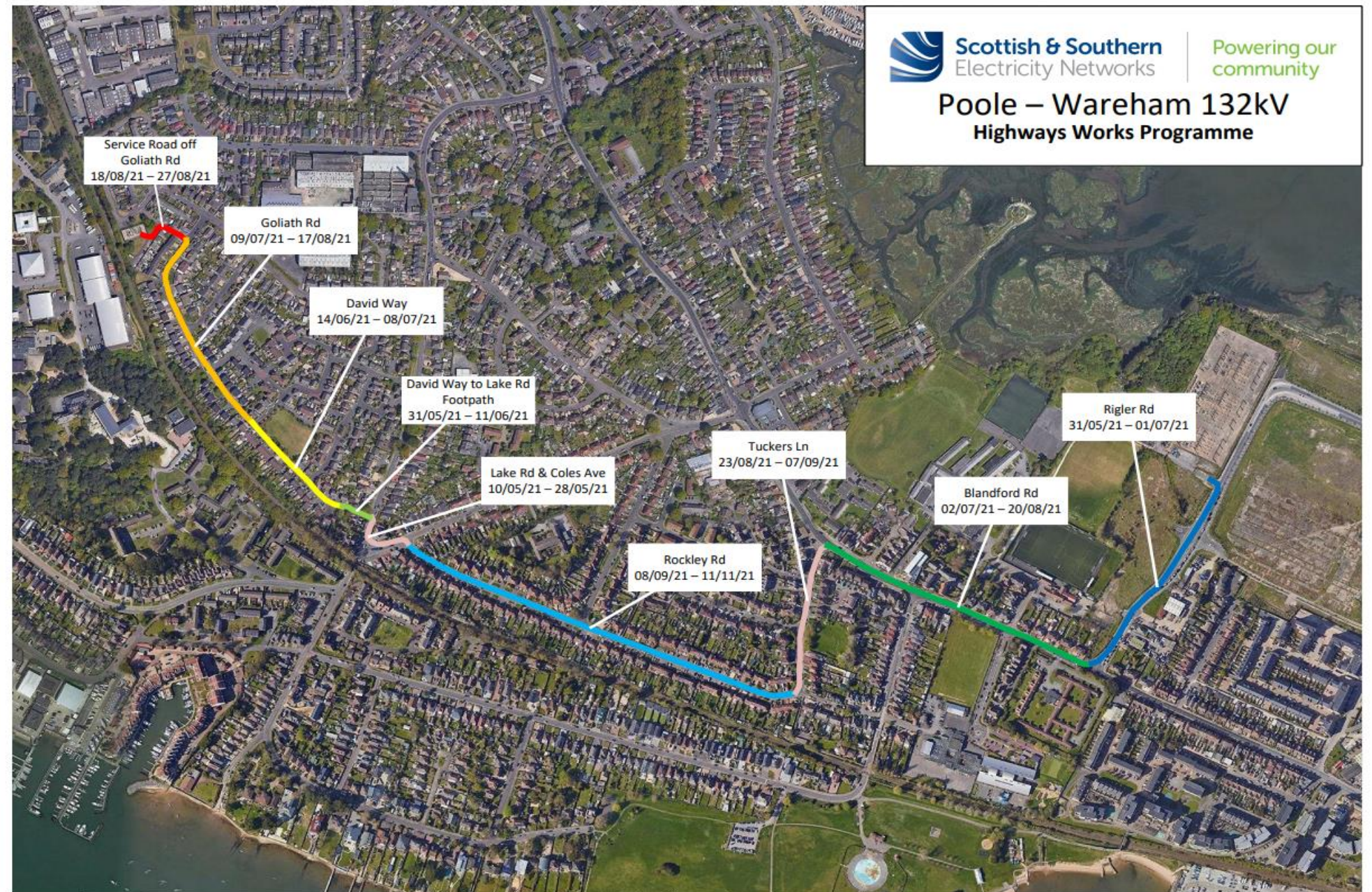


Project Timeline



Work Stream 1

- Duct installation, currently underway complete by November 2021



Project Timeline

Work Stream 2

- Joint Bays to be constructed.
- 2.8km of cables to be delivered.
- Cable pulling, joined by February 2022.

Work Stream 3

- Final connections, Commissioning and Energisation circuits by March 2022.



Mitigating Environment Impact



- We consider ourselves to be considerate and respect our environment.
- All of our projects are planned to minimise environmental impact as much as possible
- Our scheme is in close proximity to Poole Harbour, a designated Site of Special Scientific Interest (SSSI).
- Working closely with various stakeholder groups – including environmental groups to ensure the impact to wildlife and vegetation are minimalised.

Communication and Engagement



- Regular engagement meetings with BCP and Local Councillors
- Press releases
- Customer letters
- Customer Liaison Manager
- Stakeholder email updates
- Dedicated web page



Customer Letter Example



UPDATE: For the Attention of the Occupier

Project: Replacement 132kV circuits between Poole Grid and Ham Common Tower compound, which are part of the Poole/Wareham – Poole /Winfrith Heath/
Oranford Circuits

20 May 2021

Dear Resident,

I'm writing to inform you that we have commenced works in your area, as part of Poole Grid and Ham Common Tower compound 132kV circuit upgrade. We are installing 2.8 kilometers of underground cable which will replace the existing cable which is reaching the end of its working life, allowing for future commercial and residential connections. In addition to further improving the resilience of supply, this significant investment in Poole's electricity network will help to future-proof its infrastructure for the changing demands of its residents and businesses; ultimately helping the wider area of Dorset to achieve its net-zero ambitions.

How This Affects You

Work started on **Monday 10 May 2021** and we will work continuously until the project is completed. Road closures will be in place 24 hours 7 days a week. It will take 34 weeks to complete the installation of the ducts; between Poole Grid on Rigler Road to Ham Common Tower on Goliath Road. We will have two teams on the ground; Team 1 working from Rigler Road to Blandford Road continuing down Tuckers Lane, and Team 2 working from Goliath Road along David Way, through the Alleyway to Lake Road to Coles Avenue then continuing down Rockley Road.

Working hours:

Monday to Friday: 8am to 5pm
Saturday: 9am to 4pm
Sunday: 10am to 3pm

Please be assured that we will endeavour to make as little impact as possible, but that some minimal disruption is inevitable due to the nature of working in the highway. We will be liaising with properties that join the highway along our trench route as we progress, to best maintain access during the works. However, as you are aware some locations are narrow roads which cater for many residents. We will do our utmost to keep access as clear as possible, however we would advise you to park your vehicles on neighbouring roads or nearby car parks, where possible.

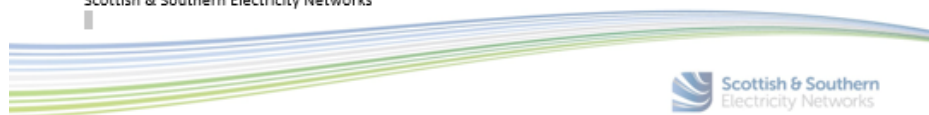
There are no planned supply interruptions to your electricity supply at this point, and this installation will not affect the existing supplies within the area. We will contact you again in the future if there is a planned interruption to energise the new cable installation.

Thank you in advance for your co-operation.

For further information, please see <https://www.ssen.co.uk/Projects/Poole-Wareham/>

Yours faithfully,

Ian Daniels
Project Manager
Scottish & Southern Electricity Networks



For the Attention of the Occupier

Project: Poole – Wareham 132kV Reinforcement Project

DATE

Dear Resident or Business Operator,

We're making a significant investment in Poole's electricity network, improving the resilience of supply which will help future-proof its infrastructure for the changing demands of its residents and businesses, ultimately helping the wider area of Dorset to achieve its net-zero ambitions.

Construction work on this £4-million network upgrade is already underway and will benefit over 20,000 Poole resident and businesses. The project will run for approximately eight months to enable the upgrade of 2.5 kilometres of underground cable; new sections of modern, robust cable will replace existing fluid-filled cable which is reaching the end of its working life, allowing for a stronger network with capacity for future commercial and residential connections.

How This Affects You

These Major works commenced on 10th May 2021 and you are probably aware of some disruption in your area. Our next phase of works will be Blandford Road between Rigler Road and Tuckers Lane. We anticipate starting these works on 1st July 2021 and these works are planned to be complete by 20th August. During these works there will be Road Closures and a one way system implemented. Please see overleaf the diversion route. Motorists are advised to follow the sign posted diversion during these works.

To enable the construction work there will Traffic Management in place as well as road closures to allow our works to complete safely. During these road closures you may have restricted vehicle access, which may include no vehicle access to your property.

Please be assured that we endeavour to have as little impact as possible, but that some disruption is inevitable due to the nature of working in the highway.

Morebus will be temporarily restructuring its 8 and 9 bus services, and diverting its Breezer 60, for the duration of the Blandford Road closure, with a likely change when the road is reopened in one direction. Full details will be posted on www.morebus.co.uk by 25th June or for those without web access by calling morebus customer services on 01202 338420 from the same date.

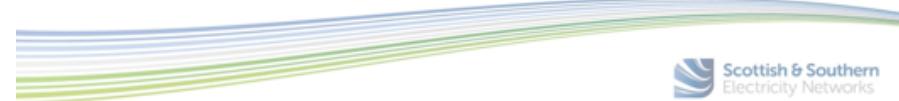
We are undertaking these works in adherence with the Government's current coronavirus guidance. These include strict hygiene measures, working in small isolated 'bubble' teams and thorough safety checks to ensure the safety of both our colleagues and customers.

We will endeavour to keep all customers in the vicinity of the works updated and allow you to raise any concerns you might have directly with the Project Team at the details below.

There are no planned interruptions to your electricity supply and this installation will not affect the existing supplies within the area. If you do experience any power interruption, you should call the emergency reporting centre on 105.

Yours faithfully,

Ian Daniels
Project Manager



Press Release Example



Poole to benefit from £3.7m investment in local electricity network

A multi-million pound investment by Scottish and Southern Electricity Networks (SSEN) to boost resilience and future-proof the electricity infrastructure of a Dorset town is set to start next month.

The £3.7 million programme of works will commence on Wednesday 14 April and will see the completion of a series of upgrades carried out in Poole (totalling? – Do you know how much investment has been made in Poole, including this project?), to ensure a reliable and secure network for the town’s 19,000 customers for years to come.

The initial part of the project will run for eight months to enable the upgrade of 2.5 kilometers of underground cable; new sections of modern, robust cable will replace the existing oil filled cable which is reaching the end of its working life, allowing for a stronger network with capacity for future commercial and residential connections.

While working to strict Government guidelines on social distancing and the use of enhanced Personal Protection Equipment (PPE), SSEN will begin these improvement works on Rigler Road towards the Junction of Blandford Road, before moving on to Rockley Road, Goliath Road and then terminating at Hams Common substation on Hercules Road.

SSEN’s working guidelines include implementing a one person one van policy and thorough safety checks in advance of any work to ensure the safety of both colleagues and customers, and SSEN would like to reassure its customers that there are no Planned Service Interruptions (PSI) for the duration of these works.

SSEN’s Project Manager, Ian Daniels said:

“I am delighted to be a part of this project which demonstrates SSEN’s commitment to providing its customers in Poole with an efficient electricity network fit for their needs now and into the future, helping them meet their net zero goals.

“I would like to reassure customers in the vicinity of these works that, as considerate constructors, my team and I will do all we can to minimise the potential for any noise and disruption.”

He continued:

“Due to current coronavirus restrictions, we are unable to hold a public engagement event for residents and business owners to come along, meet the SSEN Project Team and discuss the works.

“We want our customers to know that we are available to address any questions raised and will carry out letter drops in the coming weeks to all nearby homes and businesses, containing details of the project and various ways of contacting the team. We have also set up a project page so customers can see the latest information on the upgrade works and can contact us directly online.”

SSEN will endeavour to keep all customers in the vicinity of the works updated and able to raise any concerns they might have through its specially developed Poole Wareham Project Page [www.ssen.co.uk/Projects/Poole Wareham](http://www.ssen.co.uk/Projects/Poole%20Wareham).

SSEN is working to strict Government guidelines on social distancing and the use of enhanced Personal Protection Equipment (PPE) as it carries out this upgrade programme, with working guidelines including implementing a one person one van policy and thorough safety checks in advance of any work.

SSEN’s investment in Poole will ensure a power supply that suits the needs of residents now and in to the future by upgrading a critical section of this Dorset electricity network to help local communities achieve their decarbonisation ambitions; so as more customers turn to low carbon technologies such as electric vehicles, they have a supply and infrastructure that’s fit for purpose.