

# CHANGE OF UPCOMING TEMPORARY TRAFFIC MANAGEMENT ON B3004 BETWEEN ALTON AND KINGSLEY

We're investing £10.6million to boost your electricity network, installing 18km of cable to provide a modern and more resilient electricity network. A part of the cable route runs along the B3004 from Mill Lane through to Green Street at the junction with Forge Road and Oakhanger Road.

## New schedule of works along the B3004

We recently let you know of our upcoming works on the B3004. Following further discussion with Hampshire County Council and stakeholders, the schedule of works has changed. This will reduce travel disruption during the upcoming school exam season.

To conduct this work safely, the existing road closure on the B3004 will be maintained up to 5 May 2024. The road will then reopen for six weeks during the school exam season. On 29 June the B3004 will close to through traffic until 11 October. Local access will be maintained, in both directions, up to the section of road where the team is working.

## The new schedule of works along the B3004 is as follows:

- Mill Lane – 9 January to 5 February 2024
- Caker Lane – 5 February to 3 March 2024
- Green Street – 4 March to 5 May 2024
- Wilsom Road\* – 2 June to 9 July 2024
- Mill Lane – 9 July to 18 August 2024
- Worldham Hill – 18 August to 11 October 2024

## Reopening the B3004 during school exams

The road will be open, in both directions, from 6 May to 28 June 2024.

The location of where the roads will be closed to through traffic can be found on the maps provided in this notice. Please note this schedule is subject to change depending on site and weather conditions.

## Got a question? Join us at a community drop-in event

- 7 February from 3pm to 7pm at the Shed in Bordon (GU35 0DJ)

\*Wilsom Road will be kept open under temporary traffic lights from 2 June to 28 June. A road closure will be in place from 29 June to 9 July 2024 between the junction with Omega Park and the junction with Mill Lane.







### Maintaining local access

People who live or work on the B3004 can still drive in and out. Residents, delivery drivers, blue light services and the council's waste collection service can all still use the road in both directions, via the diversion route, up to the section of road where the team is working. Pedestrian access is always maintained.

### Why has this diversion route been chosen?

A diversion route must be suitable for all diverted traffic and be of a similar class of carriageway. The blue diversion route is the shortest available route that meets these requirements. There are other shorter routes available for cars and vans, which local road users may choose to use. However, these will not be signed in case HGV's follow the route.

### Find the location of the team during the works

Please visit [www.ssen.co.uk/alton-bordon-network-investment](http://www.ssen.co.uk/alton-bordon-network-investment) or scan the QR code to see where the team is working.



### A diversion route will be signposted

Whilst the works are carried out, a temporary diversion route will be in place. Maps of the road closure and diversion route can be found on the next page. If you are concerned about accessing your property during this time, please contact us using the details found at the bottom of this letter.

### What to expect:

- You might see us working on site during the day.
- Some low-level noise from onsite machinery during working hours.

### What we will do:

- Keep sites safe and secure, while keeping noise and disruption to a minimum.
- Answer your questions via our community phonenumber and mailbox.

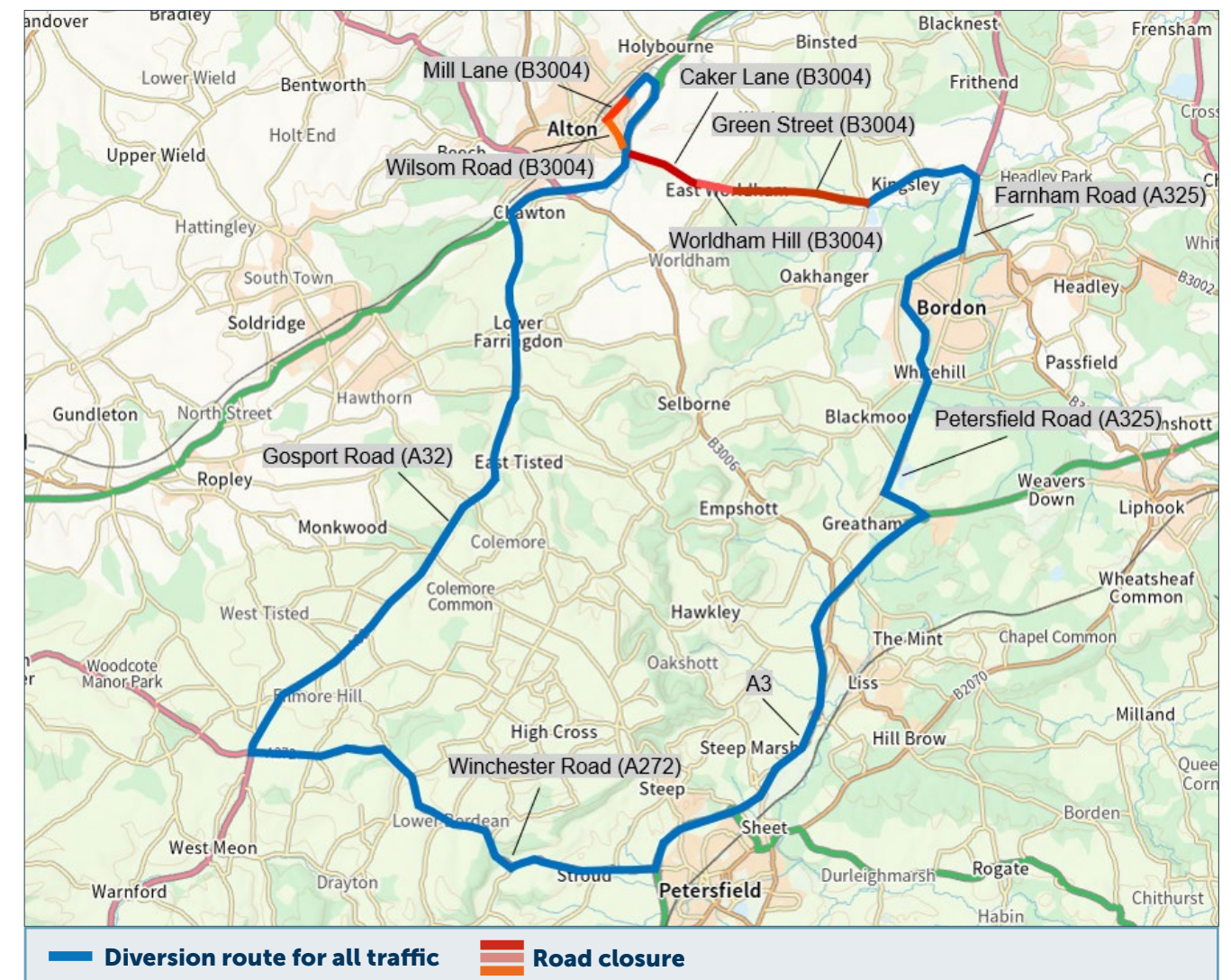
### Good to know:

There are no planned power cuts scheduled to take place during the works.

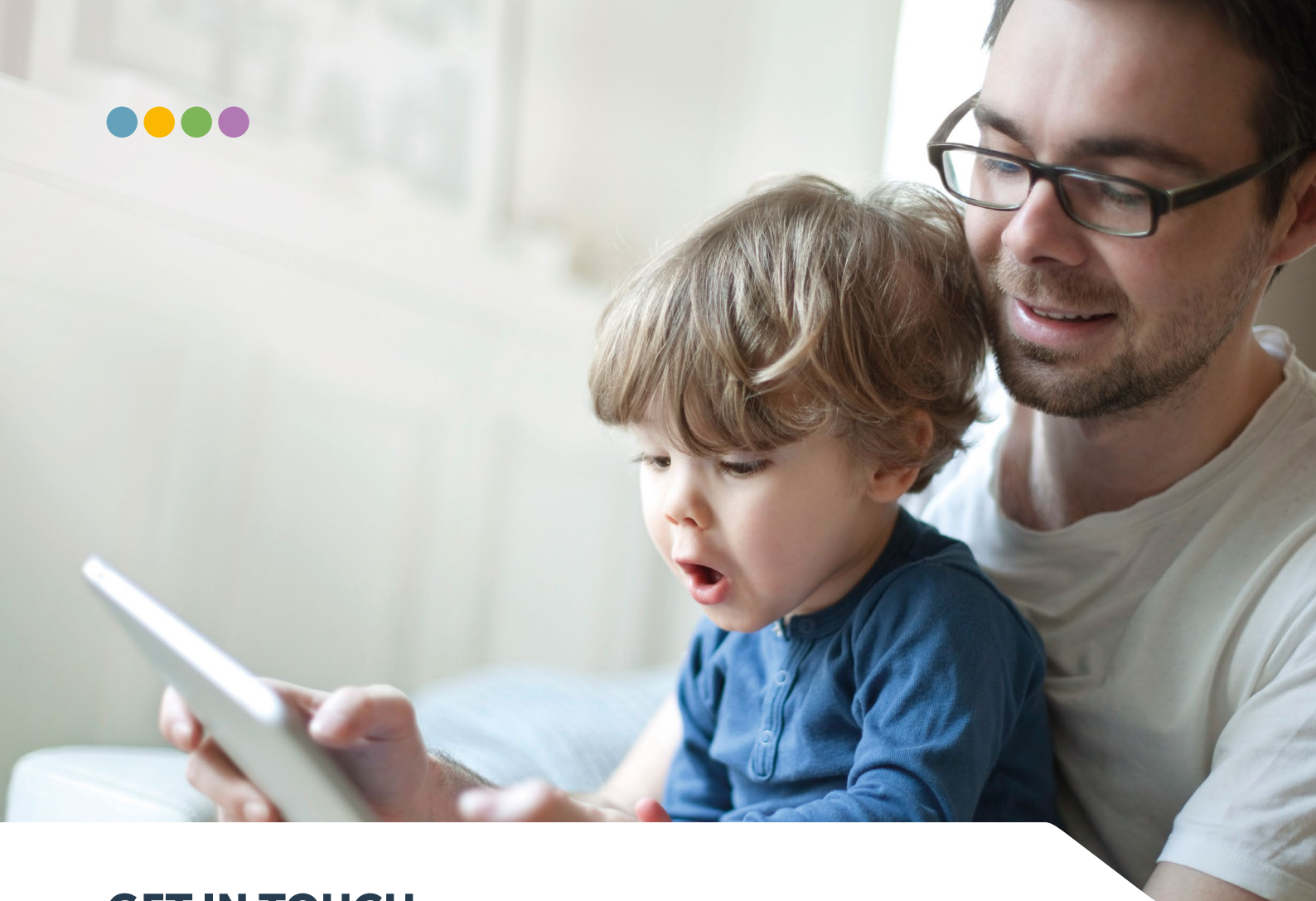
### Road closure map



### The diversion route







## GET IN TOUCH

We want to be a good neighbour and help answer any questions you may have.

### Find out more!

Visit [www.ssen.co.uk/alton-bordon-network-investment](http://www.ssen.co.uk/alton-bordon-network-investment)

### Have a query?

You can email us at [community@ssenbordon.co.uk](mailto:community@ssenbordon.co.uk) or call us on 0800 046 9034.  
Write to us using Freepost: SSEN BORDON.

### Have a complaint?

You can email us at [customercomplaints@ssen.co.uk](mailto:customercomplaints@ssen.co.uk) or call us on 0800 980 1395.  
Write to us using Freepost: SSEN BORDON.

### Concerned about vulnerability in a power cut?

Visit [www.ssen.co.uk/priorityservices](http://www.ssen.co.uk/priorityservices) or call us on 0800 2943259.



Scottish & Southern  
Electricity Networks

Powering our  
community