

INTRODUCTORY STAKEHOLDER INFORMATION PACK

SSEN Connections



Scottish & Southern
Electricity Networks




DISTRIBUTION NETWORK OPERATORS (DNOS)

This information pack has been designed to provide you with an introduction to SSEN Connections and give you an overview of useful information as a new customer or stakeholder.

SSEN is a DNO. A DNO is the company that owns and operates the network of towers, transformers, poles, cables and meters that distributes power to homes, businesses and other projects. Each DNO is responsible for specific geographic areas and you cannot choose who your DNO is. This will be determined by where in the country your home, business or project is located.

There are 14 licenced DNOs in the UK. These 14 DNOs are owned by six different groups:



Scottish and Southern Electricity Networks (SSEN)
Scottish Power Energy Networks (SPEN)
Electricity North West Limited (ENWL)
Northern Powergrid (NPG)
UK Power Networks (UKPN)
Western Power Distribution (WPD)





SCOTTISH & SOUTHERN ELECTRICITY NETWORKS (SSEN)

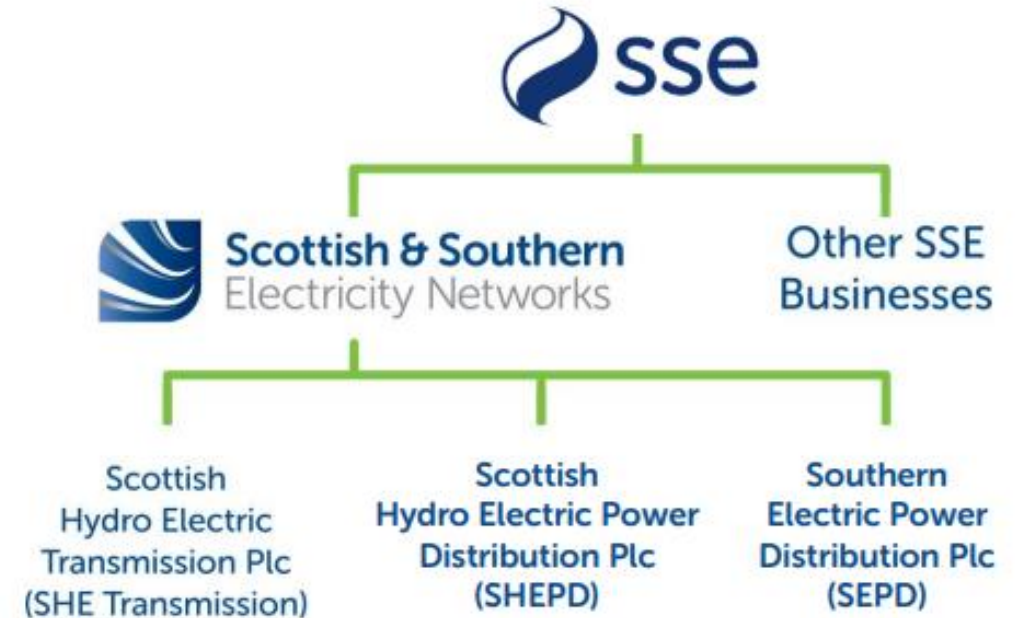
Scottish & Southern Electricity Networks (SSEN) hold two DNO licences.

One in the north of Scotland:
Scottish Hydro Electric Power Distribution (SHEPD)

One in central southern England:
Southern Electric Power Distribution (SEPD)

Although SSEN's two licence areas are named differently, for all intents and purposes, we work under the SSEN company name.

You can find out more about SSEN on [our website](#).



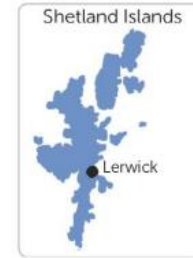
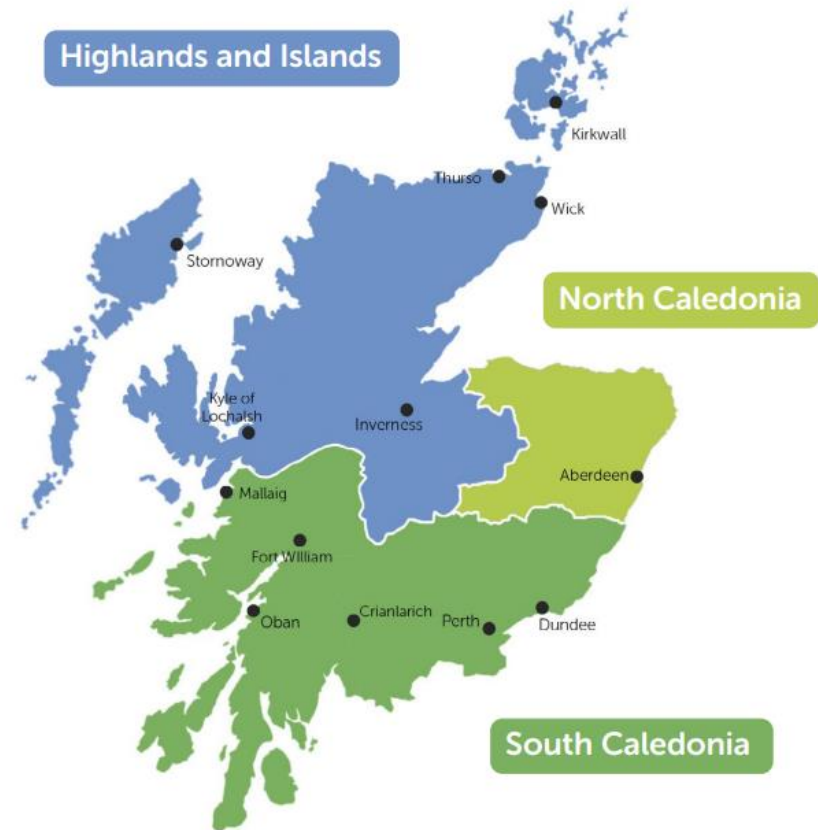


SHEPD AND SEPD – SSEN'S LICENCE AREAS

SEPD (south)



SHEPD (north)

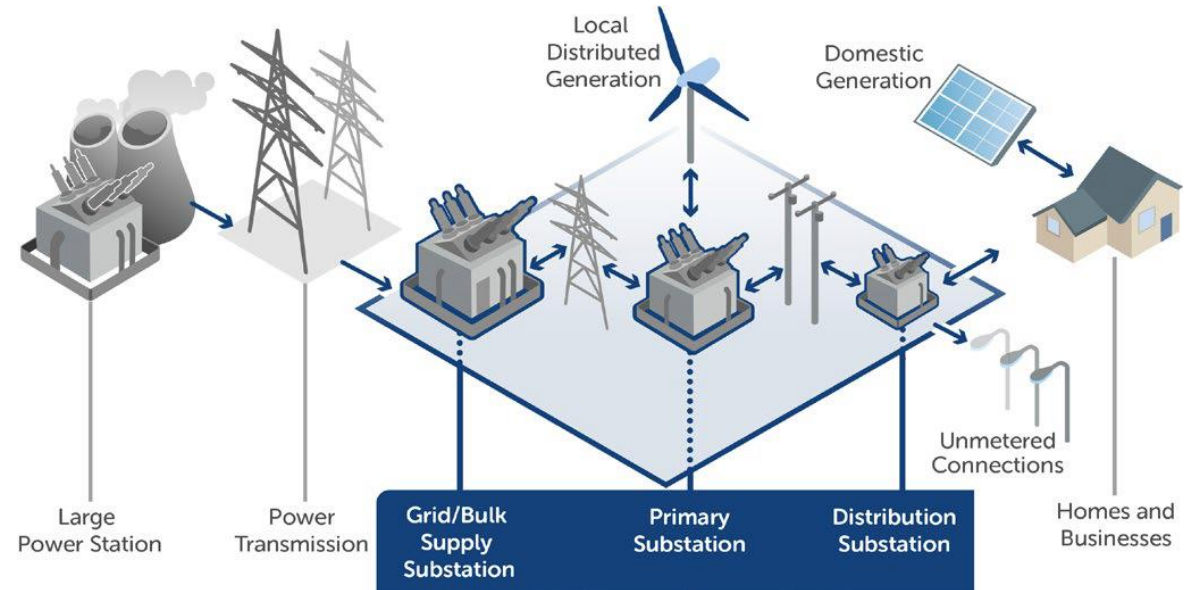




SSEN CONNECTIONS

SSEN are responsible for developing, operating and maintaining the electricity distribution network in their two licence areas, SHEPD and SEPD. This includes providing essential associated services, one of which is connecting new homes, businesses and projects to the network.

SSEN have a wealth of information and services available to you to assist you in getting to know our networks, processes and people. The following information is intended to provide you with the information required to get you started on your Connections journey and to confidently submitting an application with us.





INFORMATION AVAILABLE TO YOU

As with any project, the first stage is to work out the required parameters. There are several things to consider at this stage, from location to who will deliver your final project. SSEN has several resources available to you at this stage to help you narrow down your options and create the project that best suits your requirements.

Network Information

Generation and Demand heat maps,
Long Term Development Statement,
GIS, G81

Mailing List

Subscribe to our Mailing List to be
kept up to date and receive
invitations

Connections Meetings

Book a meeting to discuss your pre-
application requirements or progress
of an existing project

Low Carbon Technologies

Information on LCTs i.e. electric
vehicles (EVs) and heat pumps

Videos

Visit our YouTube channel for videos
and recorded webinars

Events and Webinars

Visit our event calendar to register
for a variety of engagement
opportunities

Contact Guides

Unsure who you need to speak to?
See our contact guides

Flexible Connections

Information on flexible connection
options available to you

Application

Apply online for a Connection Offer

You Have a Choice

Information on what choices are
available to you for connection
services

Improvements & Commitments

Find out what improvements we're
working on and how to get involved

Connection Offer Expenses

The costs we incur in producing your
Connection Offer

Performance, Standards & Charges

Queue Management

The queue of accepted connection
offers not yet connected

Interactivity

When the validity of one quotation is
dependent on the outcome of
another



GET IN TOUCH

Engage with us online



[Search 'SSEN Connections Engagement'](#)



twitter.com/ssencommunity



facebook.com/ssencommunity



instagram.com/ssencommunity/



www.ssen.co.uk/Connections/

[Search 'Scottish and Southern Electricity Networks' on YouTube](#)



Feedback

Have any feedback about this document?

Let us know at connectionsfeedback@sse.com

