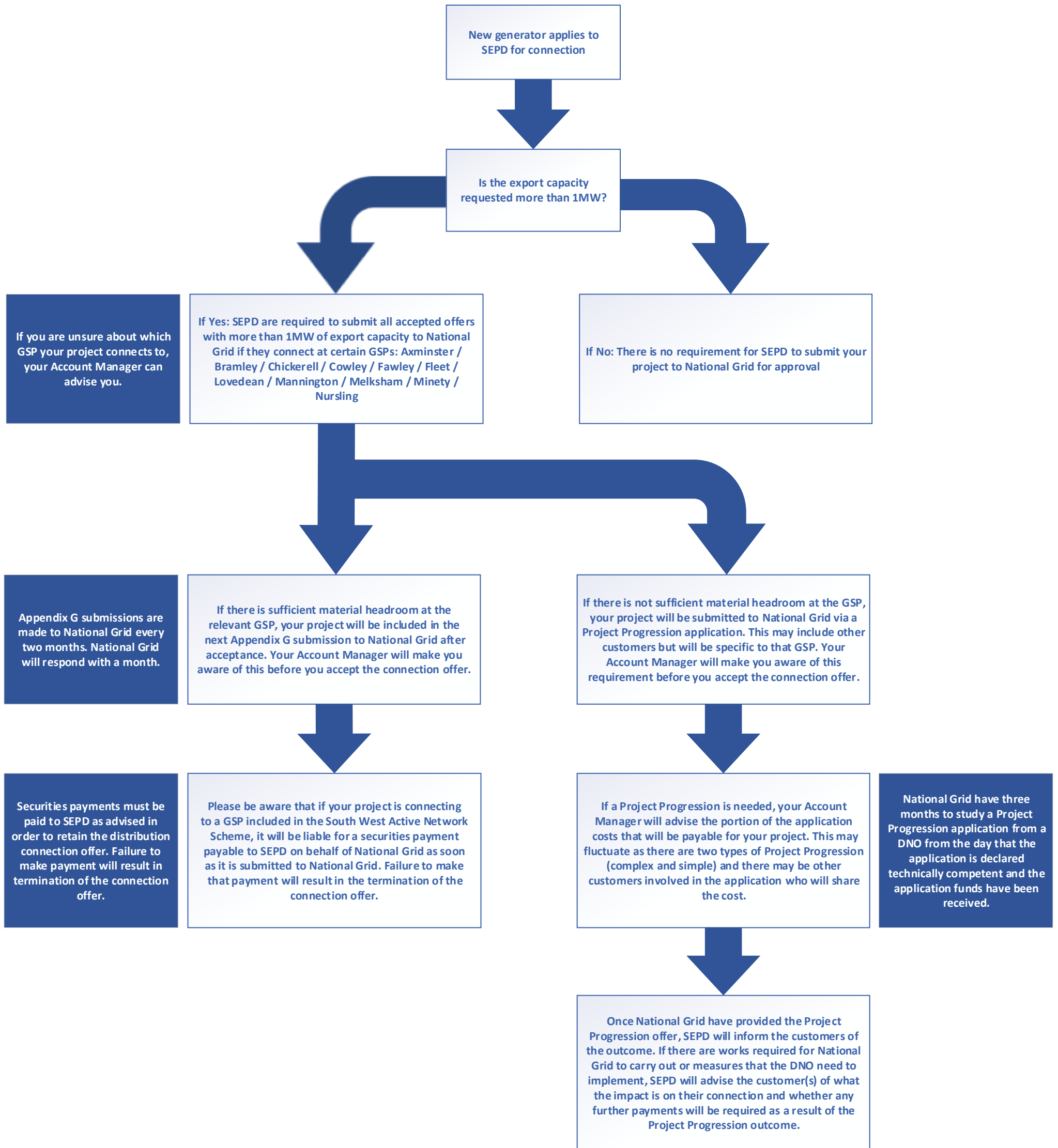


# SEPD - NATIONAL GRID PROCESS



## LEGEND

SEPD	Southern Electric Power Distribution: Scottish & Southern Electricity Networks' southern electricity distribution license which operates in Central Southern England.
GSP	Grid Supply Point: a substation within which the transmission system connects to the distribution system.
Material Headroom	The material headroom at a GSP is the difference between the Total Aggregated Developer Capacity and the connected/accepted projects already located at that GSP.
Securities Payments	A connection project becomes liable for a securities payment when it is submitted to the Transmission System Operator if there are works that the TSO will need to complete to enable that connection.
Active Network Scheme/ Active Network Management	Using flexible network customers autonomously and in real-time to increase the utilisation of network assets without breaching operational limits thereby reducing the need for reinforcement, speeding up connections and reducing costs
National Grid	National Grid is the organisation which operates as both the Transmission Operator and the Transmission System Operator in England.
Project Progression	A Project Progression is an application made to National Grid when the accepted connection offers exceed the material headroom at a particular GSP. Each Project Progression is specific to a particular GSP.
Appendix G	Appendix G is the process which has been implemented as a trial between the TSO and the DNOs as a means by which the TSO is informed about the export connections being accepted and connected at certain GSPs.