



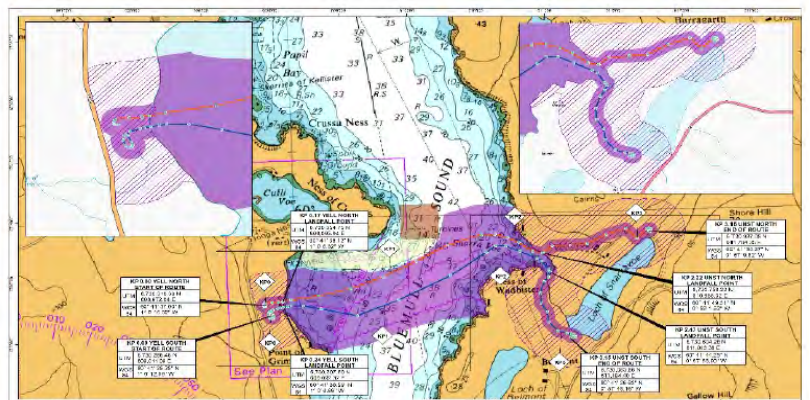
Yell-Unst Submarine Electricity Cable Replacements

Scottish Hydro Electric Power Distribution plc (SHEPD) has a licence to install two replacement 33kV submarine electricity cables from Point of Grimsetter in Yell to Ness of Wadbister in Unst in the Shetland Isles.

The existing cables were installed in 1984 and 1989 and are nearing the end of their operational life.

This has been verified through our existing asset records and following recent visual inspections by ROV on the cables.

The replacement of these cables is essential to securing SHEPD power supplies to the island of Yell and supports the security of supply to Unst and Fetlar.



Global Symphony



Global Symphony is a purpose built vessel, designed to support inspection, maintenance and repair work as well as remotely operated vehicle (ROV) survey operations. It is 130.2m in length with a breadth of 24m, a draft of 7.5m and a maximum speed of 16kts.

IMO: 9492581

MMSI: 311049100

Call Sign: C6YY3

Marine Operations Safety

During operations the vessels engaged in operations will exhibit appropriate lights and shapes prescribed by the International Regulations for Preventing Collisions at Sea; relative to their operations. All vessels engaged in the activity will also transmit an Automatic Identification System (AIS) message.

Other vessels should maintain an appropriate and safe distance of 500m when passing whilst the vessel is undertaking operations and should pass at the lowest possible speed to avoid vessel wash effects.

The vessels will be working up to 24 hours per day and will display appropriate day shapes and lights during reduced visibility and night operations.

Mariners are reminded to navigate with caution and keep continued watch on VHF Ch. 70/16 when navigating the area.

Other vessels

Various other smaller vessels will be used during shallow water and shore landing operations. These will be specified through regular Notice to Mariners.



FCV3000 ROV



The pre removal inspection and marine operations phase will be viewed using an ROV, which will be launched over the side of the survey vessel.

The FCV3000 will be utilised to survey the proposed cable route.

Post operations, the ROV will also be utilised to view cable and record position on the seabed once in place.

Location of Operations

Yell North cable end: 6730316.39 N 608972.64 E Unst North cable end: 6730937.09 N 611764.35 E
Yell South cable end: 6730266.46 N 609011.09 E Unst South cable end: 6730063.66 N 611194.40 E

If you have any questions please contact:

Craig Mullen

Scottish and Southern Electricity Networks



07384 452 823

Alex Winrow-Giffin

Brown & May



07760 160 039

Glenn Munachen

Global Marine



01224 519863



Scottish & Southern
Electricity Networks

Scottish and Southern Electricity Networks

Inveralmond House, 200 Dunkeld Road, Perth PH1 3AQ

Find us



SSEN Community

Follow us



@ssencommunity



ssen.co.uk